

NOTE: We recommend that this product is installed by the professional only. We accept no liability for damages caused by incorrect assembly, installation or use. If there is any doubt, please contact the specialist from the seller for help.

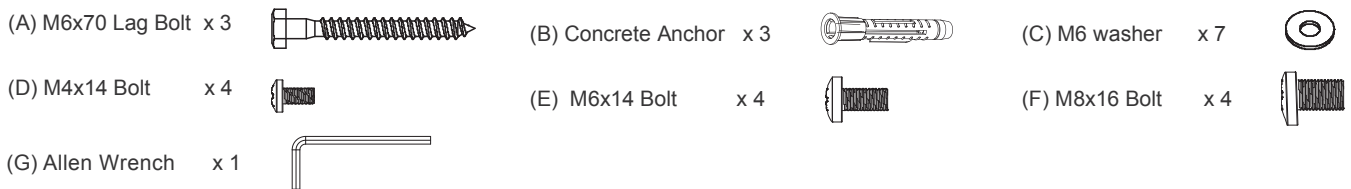
IMPORTANT!

- For safety reasons, the wall or mounting surface must be capable of supporting the combined weight of the mount and the display; otherwise the structure must be reinforced.
- Safety gear and proper tools must be used. Failure to do so can result in property damage and/or serious injury.
- Make sure that no electrical cables, water pipes or gas pipes are located within the wall.

Tools required for the installation:

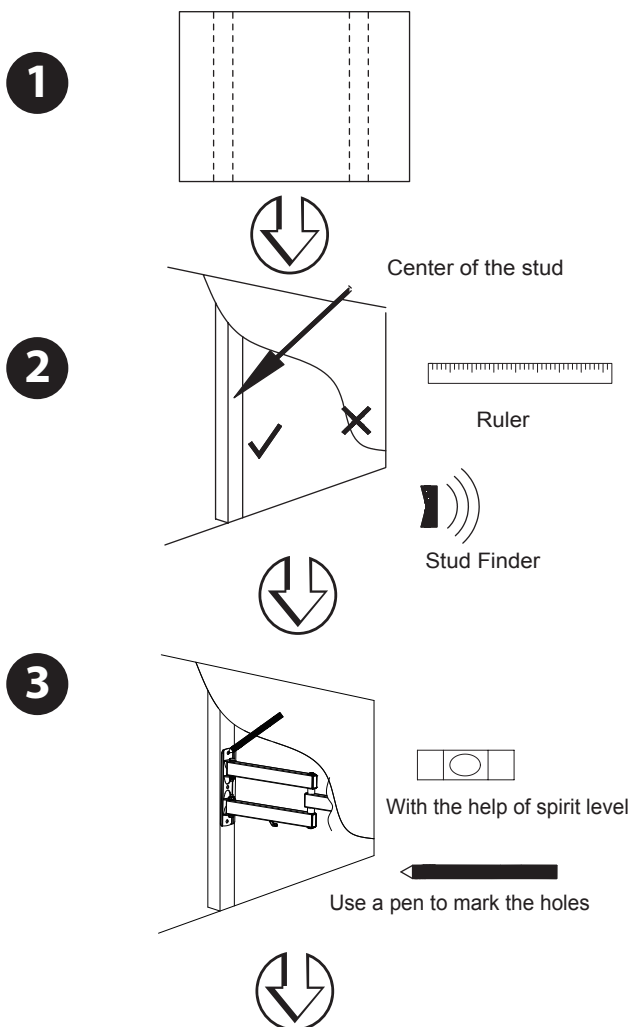
- Phillips Head Screw Driver
- Electric or Portable Drill
- Ratchet Driver with 1/2" (13 mm) Socket
- 1/4" (6 mm) Drill Bit + Stud Finder (Drywall Installation)
- 5/16" (8 mm) Masonry Bit (Concrete Installation)

Also make sure that all of the hardware has been included with your mount. You should find the following:

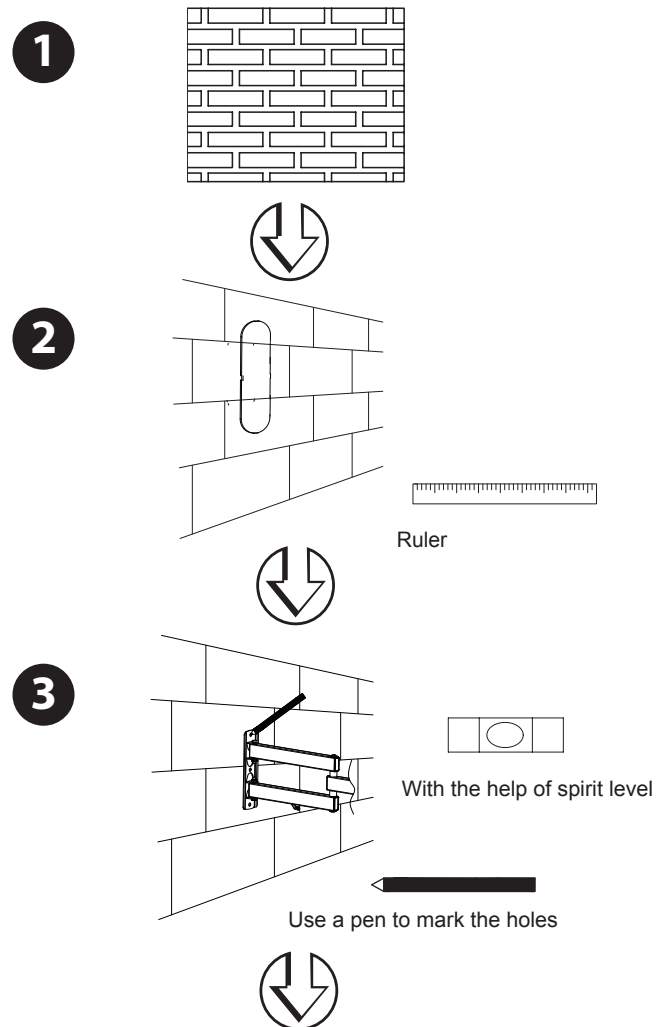


Installing the wall mount

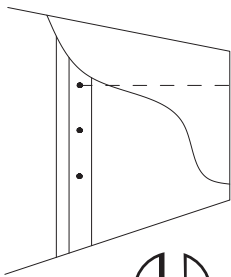
Drywall Installation



Concrete/Brick Installation



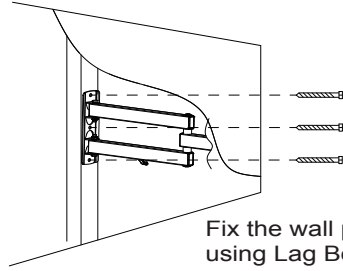
4



Use electric drill to bore three holes



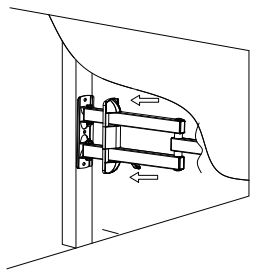
5



Fix the wall plate to the wall using Lag Bolt and Lag Bolt washer provided.

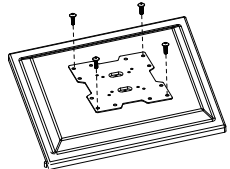


6



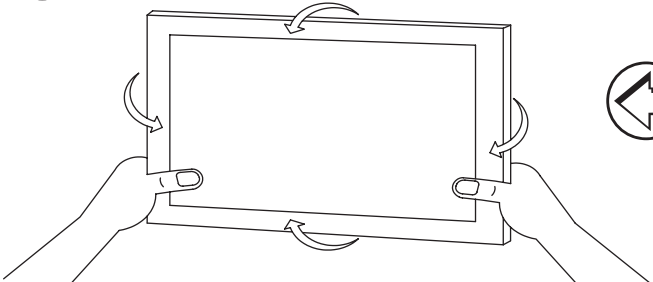
Fix plastic cover as picture

7



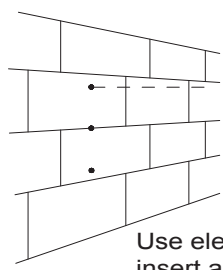
Choose proper from D,E,F and washer C

10



Tighten or loosen the tilt knob to make the tilt happen.

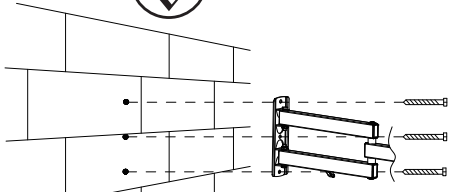
4



Use electric drill to bore three holes, insert anchor into hole



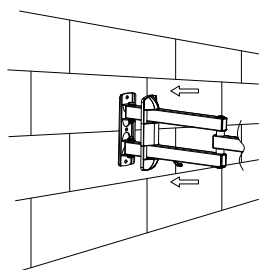
5



Fix the wall plate to the wall using Lag Bolt and Lag Bolt washer provided.

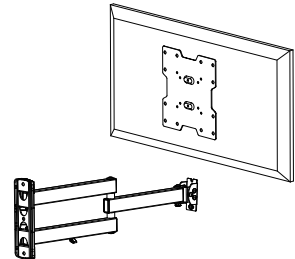


6



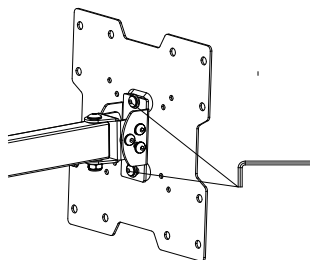
Fix plastic cover as picture

8



Connect the VESA plate and TV with wall plate

9



Tightening safety screw to ensure good connection.